

# NEW PRODUCT NEWS



NTK650

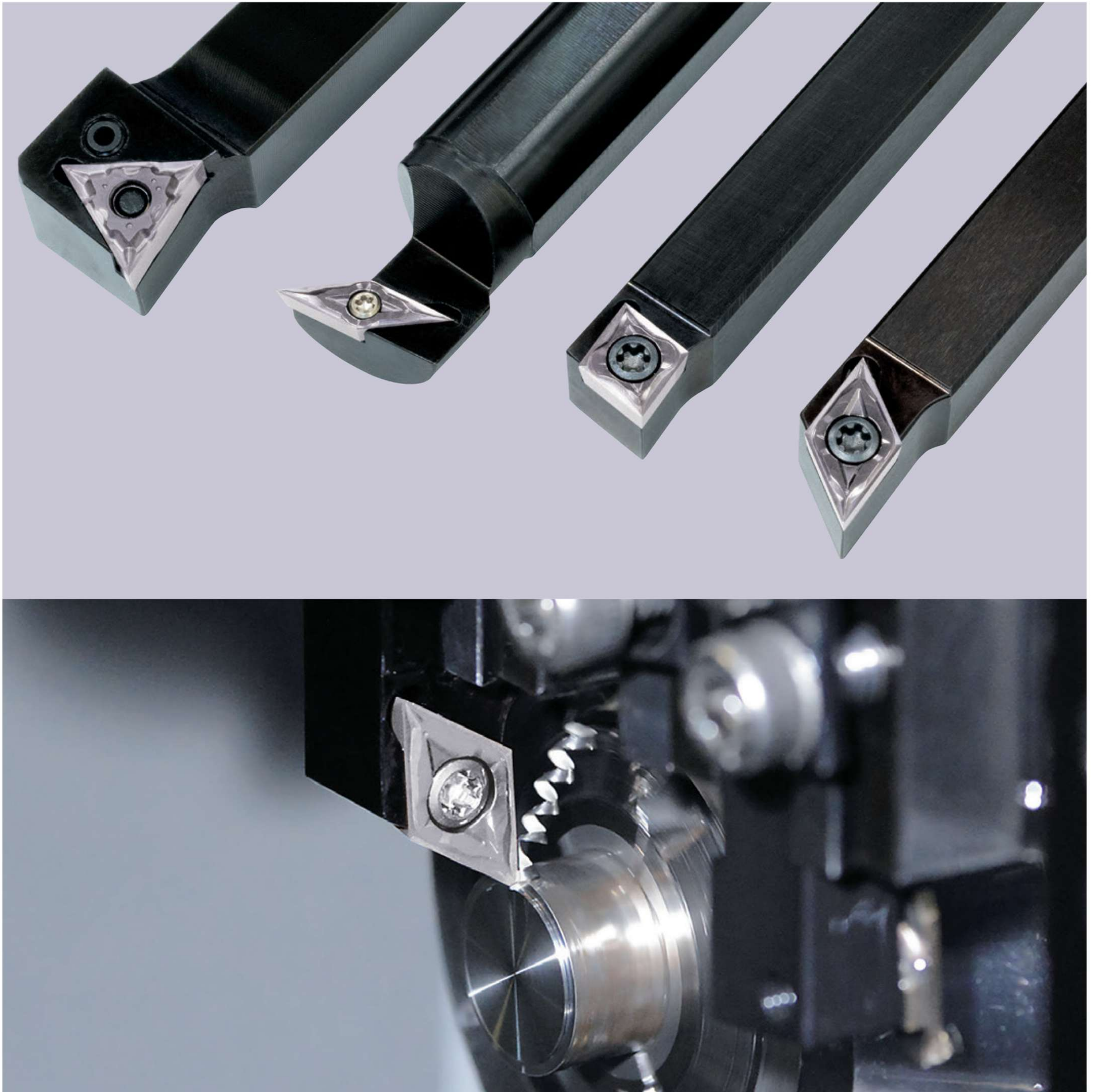
For small diameter parts | Materials for processing Ni-based alloys

**CLASS S "DEDICATED" MATERIAL, FINALLY BORN**



Specialized for  
Ni base alloys

NTK650



**For more stable machining of small-diameter Ni based components**

Common challenges in Ni-based alloy Machining: Edge damage and wear from welding.  
Discover stable machining with NTK's Innovative Material, 650.

**New HiPIMS PVD grade**

# NTK650

For small diameter parts | Materials for processing Ni-based alloys

## NTK650

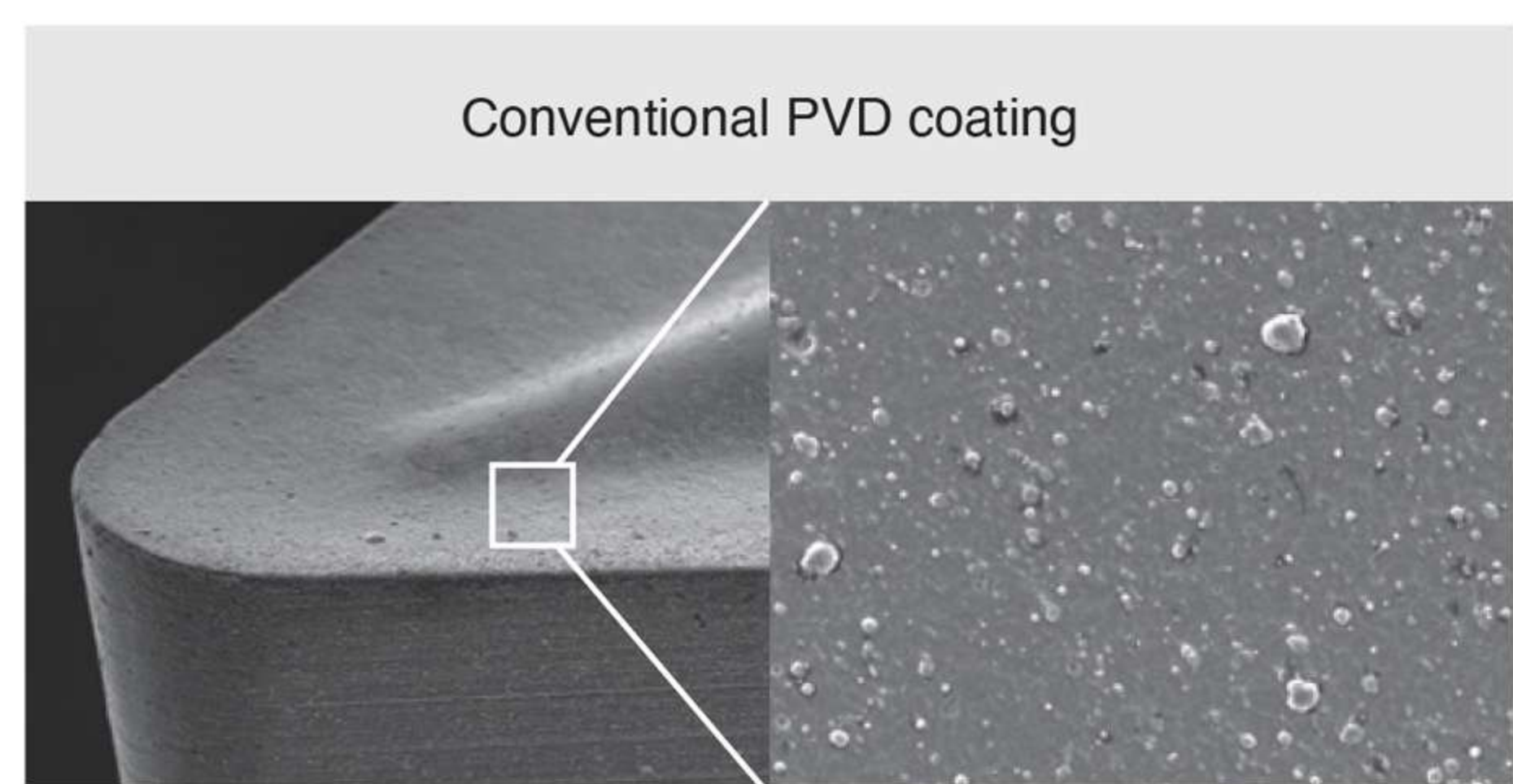
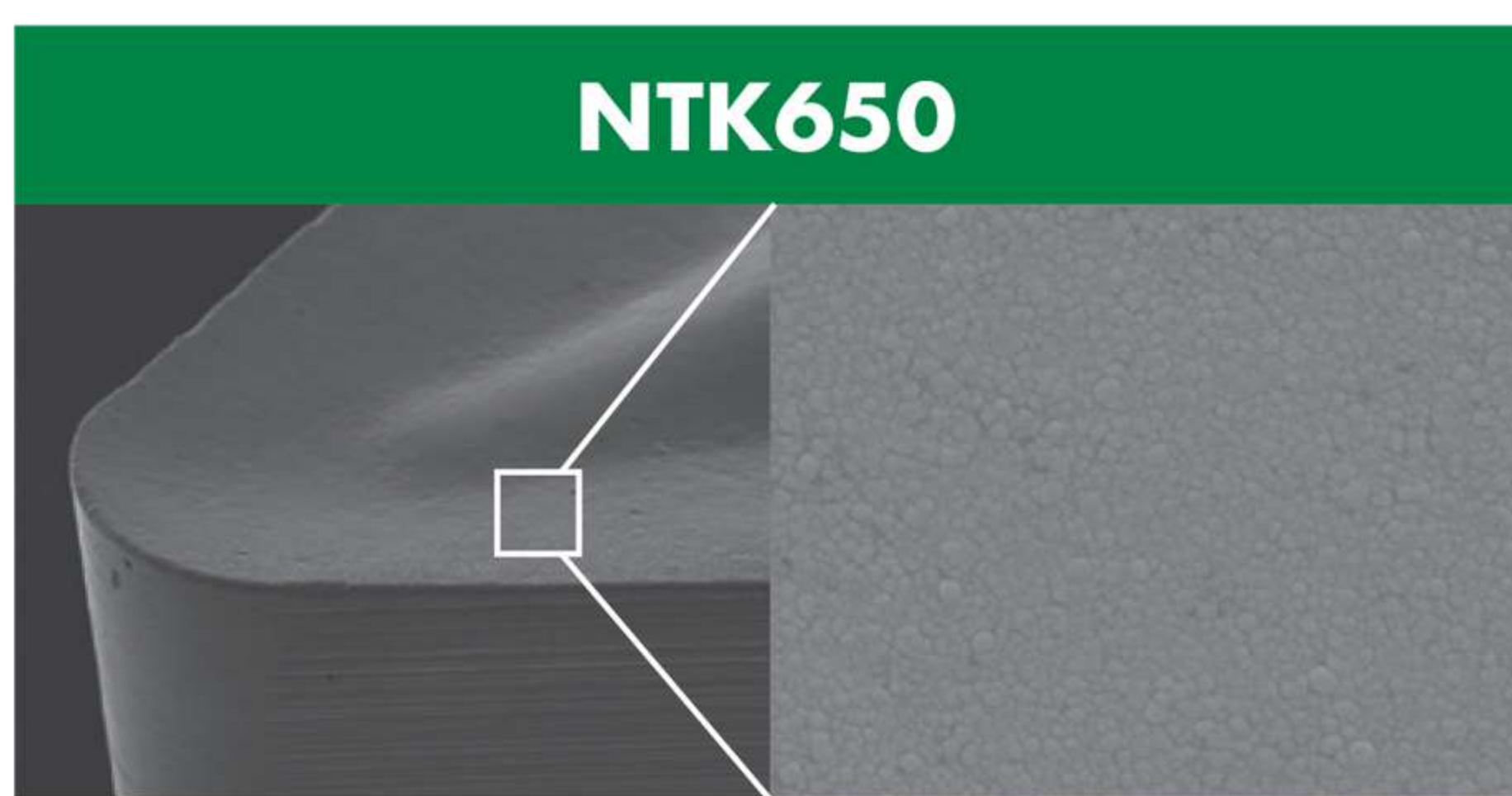
### Stable machining of [ Ni base alloys x small diameter parts ] for all users

#### Features

- **Adoption of new HiPIMS coating. Improvement of surface-smoothness and suppression of imperfections in film**  
Improves welding performance, which is critical to Ni base alloys. Provides stable machining
- **TiAlN system with excellent hardness and heat resistance achieves long life**  
Excellent wear resistance even in difficult-to-machine material processing with high cutting edge temperature

#### Applicable Applications

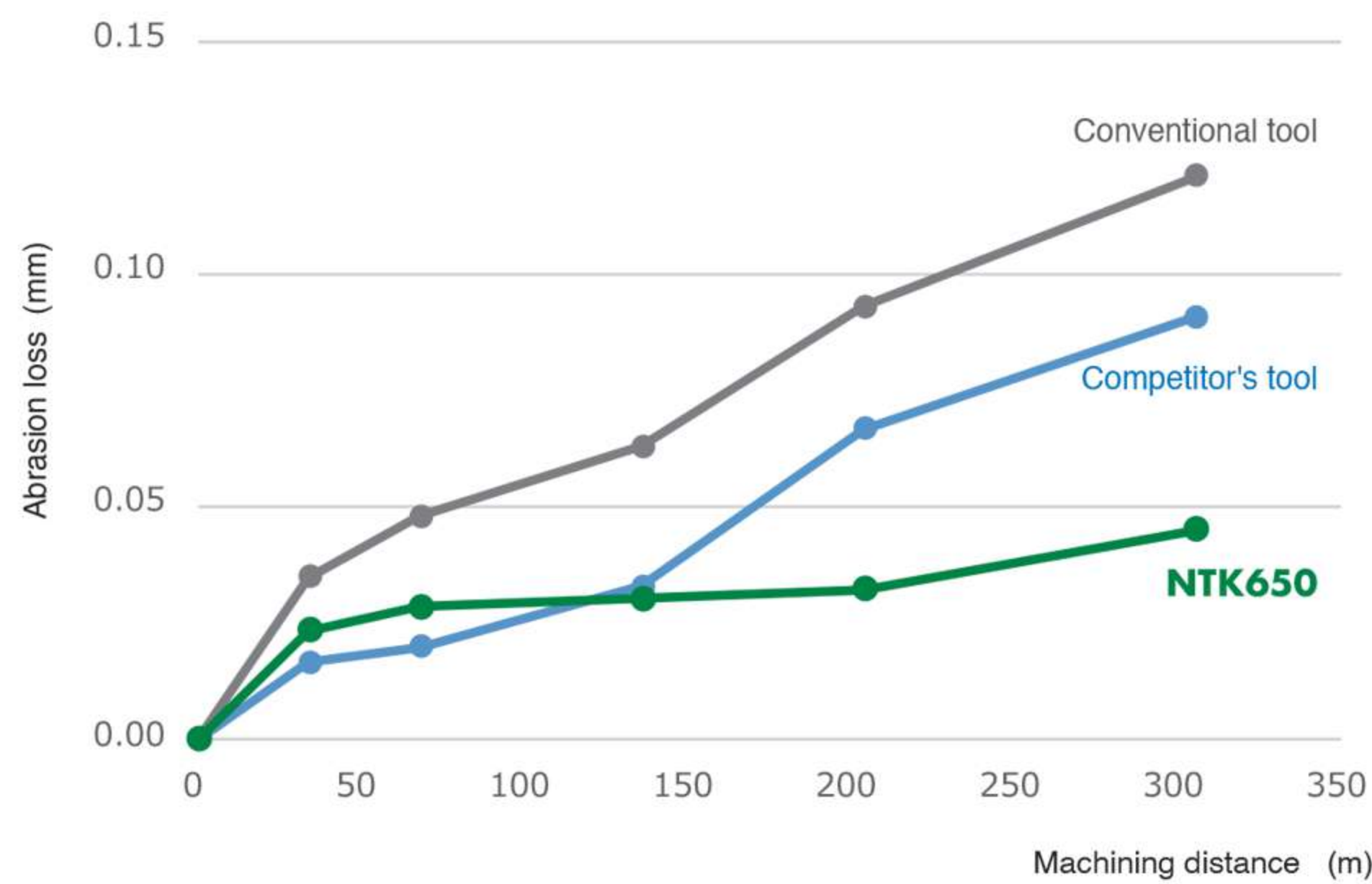
- Small diameter of Ni base alloys. (Approx.  $\Phi 20$ ) for best performance on workpieces
- Introducing three new types of NTK's best-selling chipbreakers



#### Performance

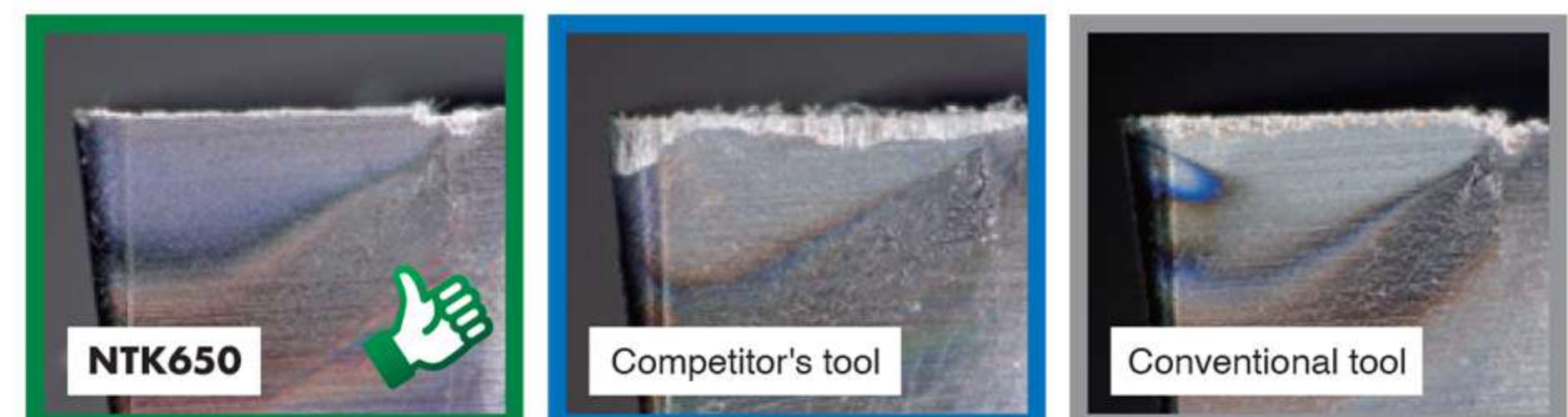
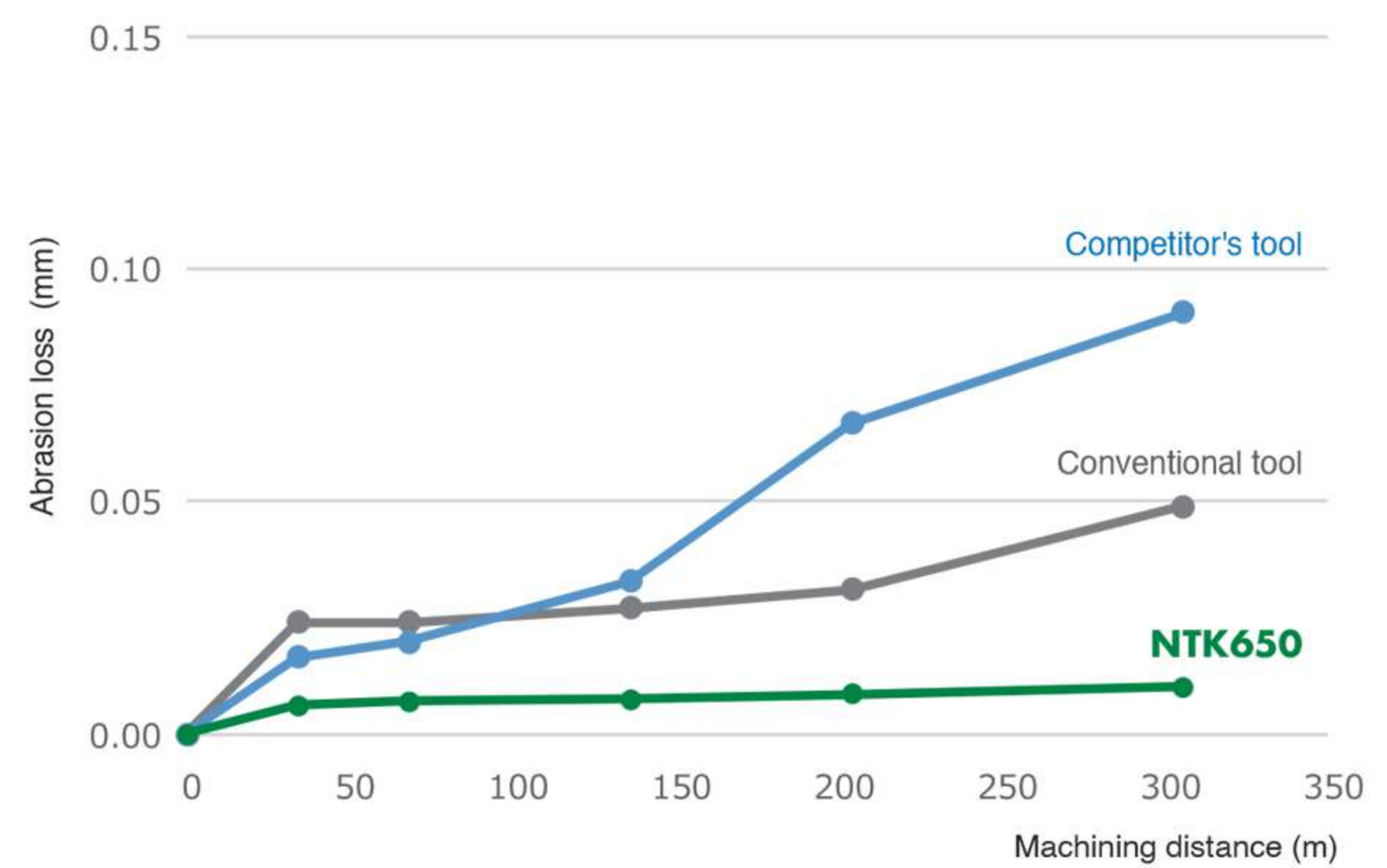
**Material: Inconel 718**

$V_c=50\text{m/min}$   $f=0.05\text{mm/rev}$   $a_p=1.0\text{mm}$  WET, DCGT11T302



**Material: Hastelloy C22**

$V_c=80\text{m/min}$   $f=0.05\text{mm/rev}$   $a_p=1.0\text{mm}$  WET, DCGT11T302

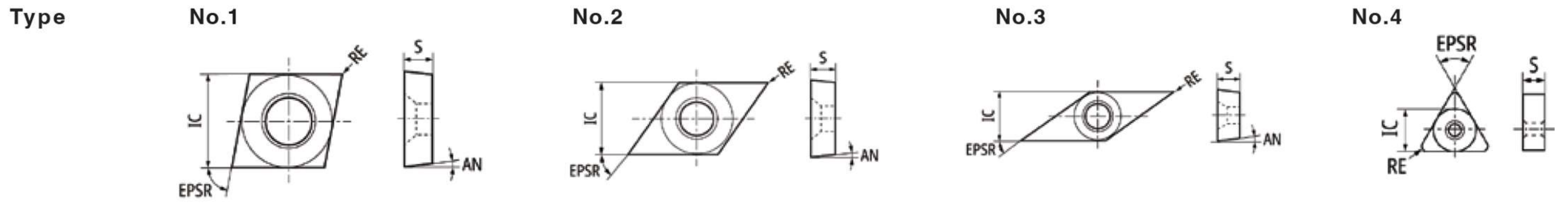


#### Cutting conditions

Grade	Work material	Cutting parameters		
		Cutting Speed (m/min)	Feed (mm/rev)	Depth of cut (mm)
NTK650	Inconel	30 - 60	0.03 - 0.07	0.5 - 1.5
	Hastelloy	50 - 100	0.03 - 0.07	0.5 - 1.5

## NTK650

### Lineup



Shape	Type	Product Number (Metric)	CECC	EPSR °	IC mm	S mm	AN °	RE mm	BS mm	Carbide
										PVD 650
	1	CCGT09T301MYL	Sharp edges	80	9.525	3.97	7	0.08	-	●
	1	CCGT09T302MYL	Sharp edges	80	9.525	3.97	7	0.18	-	●
	1	CCGT09T304MYL	Sharp edges	80	9.525	3.97	7	0.38	-	●
	1	CCGT09T301MCL	Sharp edges	80	9.525	3.97	7	0.08	-	●
	1	CCGT09T302MCL	Sharp edges	80	9.525	3.97	7	0.18	-	●
	1	CCGT09T304MCL	Sharp edges	80	9.525	3.97	7	0.38	-	●
	2	DCGT11T301MYL	Sharp edges	55	9.525	3.97	7	0.08	-	●
	2	DCGT11T302MYL	Sharp edges	55	9.525	3.97	7	0.18	-	●
	2	DCGT11T304MYL	Sharp edges	55	9.525	3.97	7	0.38	-	●
	2	DCGT11T301MCL	Sharp edges	55	9.525	3.97	7	0.08	-	●
	2	DCGT11T302MCL	Sharp edges	55	9.525	3.97	7	0.18	-	●
	2	DCGT11T304MCL	Sharp edges	55	9.525	3.97	7	0.38	-	●
	3	VCGT110301MYL	Sharp edges	35	6.35	3.18	7	0.08	-	●
	3	VCGT110302MYL	Sharp edges	35	6.35	3.18	7	0.18	-	●
	3	VCGT110304MYL	Sharp edges	35	6.35	3.18	7	0.38	-	●
	3	VCGT110301MCL	Sharp edges	35	6.35	3.18	7	0.08	-	●
	3	VCGT110302MCL	Sharp edges	35	6.35	3.18	7	0.18	-	●
	3	VCGT110304MCL	Sharp edges	35	6.35	3.18	7	0.38	-	●
	4	TNGG160401MFNUL	Sharp edges	60	9.525	4.76	-	0.08	-	●
	4	TNGG160402MFNUL	Sharp edges	60	9.525	4.76	-	0.18	-	●
	4	TNGG160404MFNUL	Sharp edges	60	9.525	4.76	-	0.38	-	●

● : First recommendation  
○ : Second recommendation

Steel	○
Stainless steel	○
Cast Iron	
Nonferrous metals	
Heat-resistant alloy	●
High hardness material	
Others (non-metallic)	

# CONTACT US



## MEGA TECH METALWORK CO.,LTD ( Headquarter )



**Tel : 02-943-1591**



**Fax : 02-943-1592**



**Line ID : @mgt\_metalwork**



**Email : sales.m@mgtg.co.th**



**Web : <https://www.mgtg.co.th/>**



**17/4 Soi Ramintra 89  
Ramintra Khannayao  
Bangkok 10230**

