

NEW PRODUCT NEWS



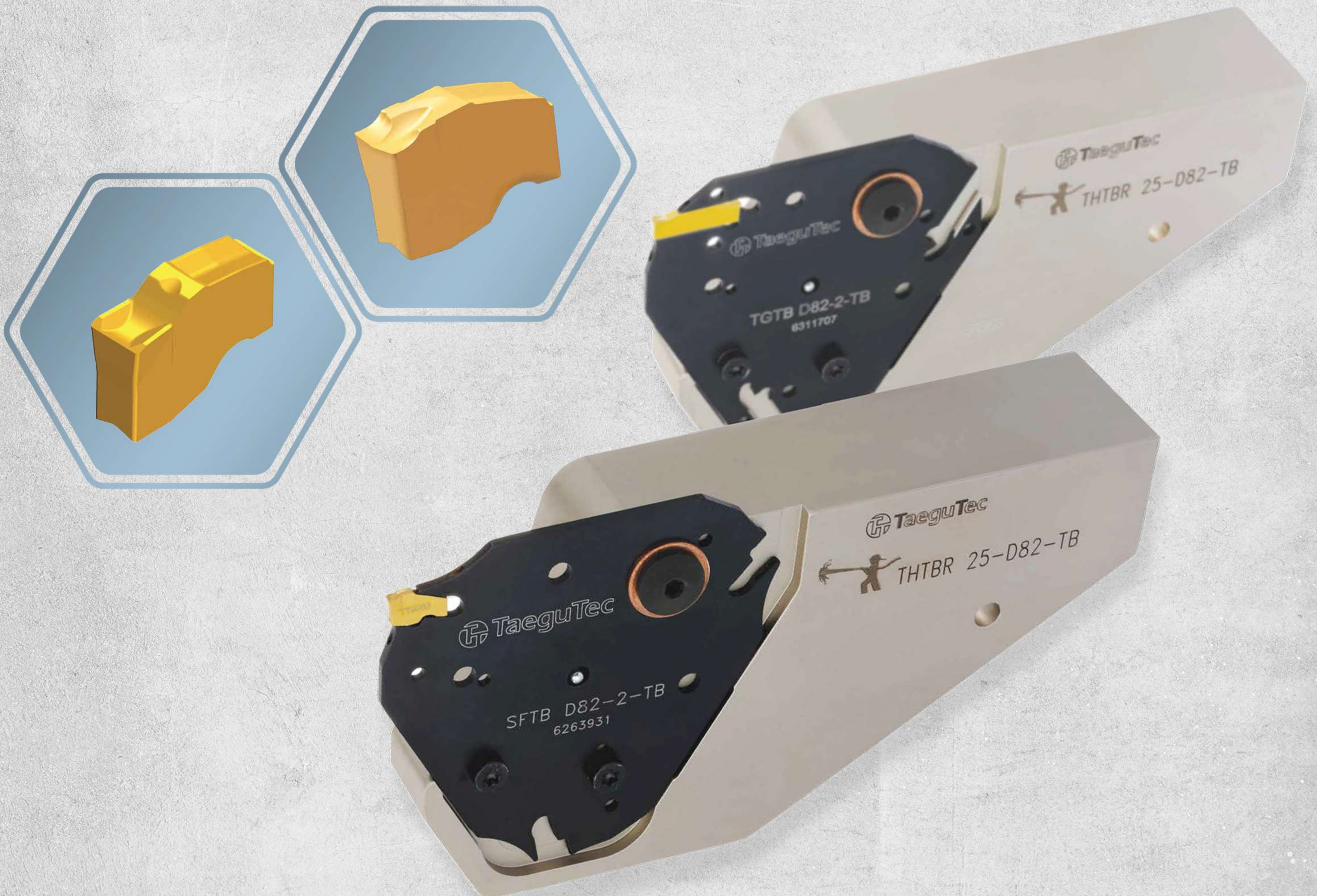
Taegutec Parting & Grooving Line

WINCUT

ADVANCED PARTING



**NEW TRIANGULAR BLADES AND BLOCKS
FOR PARTING AND DEEP GROOVING WITH INTERNAL HIGH-PRESSURE COOLANT**



KEY POINT

TaeguTec introduces triangular blades and blocks to the WIN-CUT line for parting and deep grooving using internal high-pressure coolant.

The new line, which includes blades with three insert pockets and dedicated blocks, WIN-CUT products enable very stable machining in parting and deep grooving applications. In either high feed or interrupted cutting conditions, WIN-CUT ensures an excellent surface finish with minimal vibration.

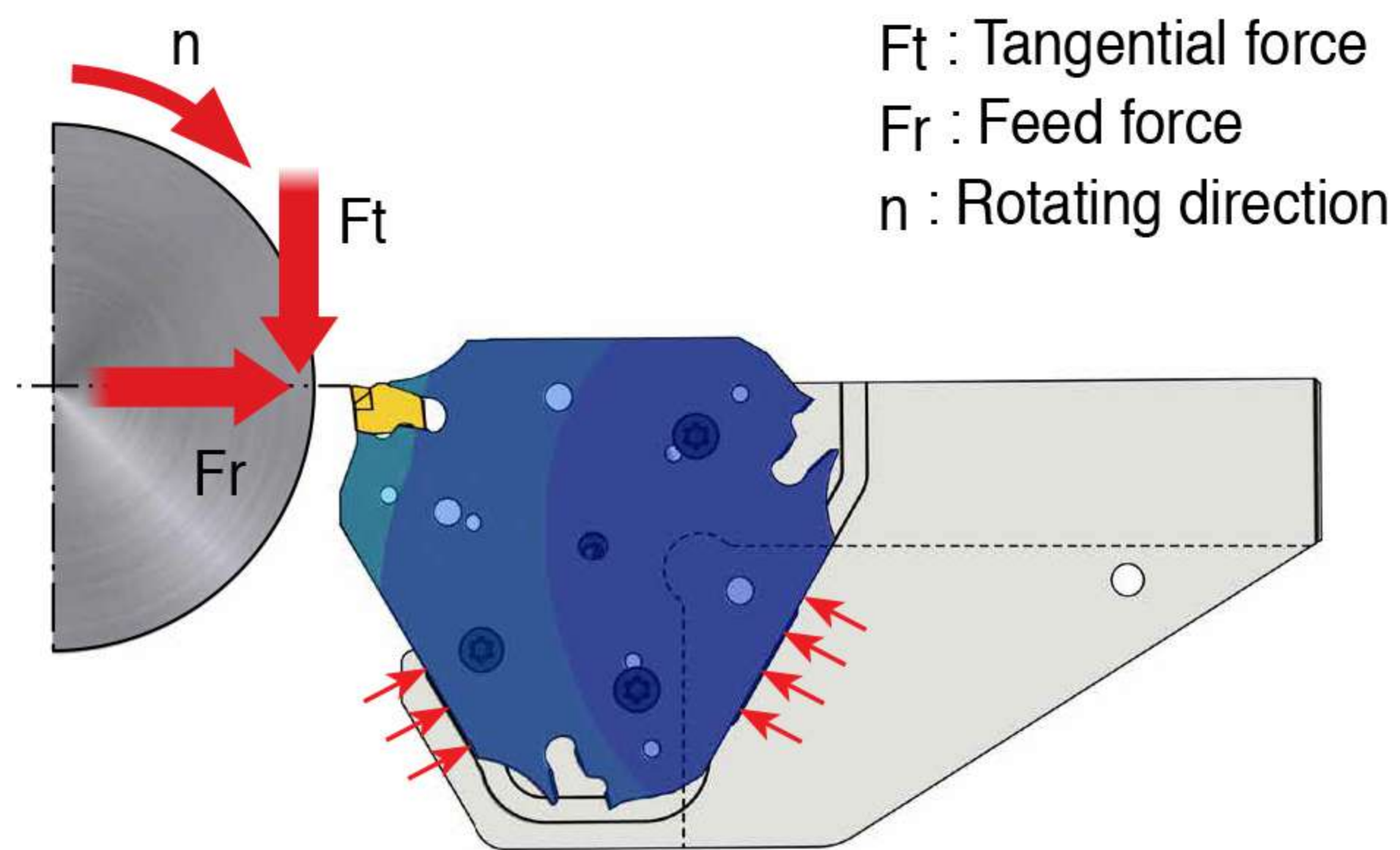
Reinforced blocks, designed to support the three insert pocket blades, firmly seat the blade on two sides (the drophead and the turret). The blades include internal through-coolant channels directed to the insert's cutting edge, significantly increasing productivity and tool life.

Features

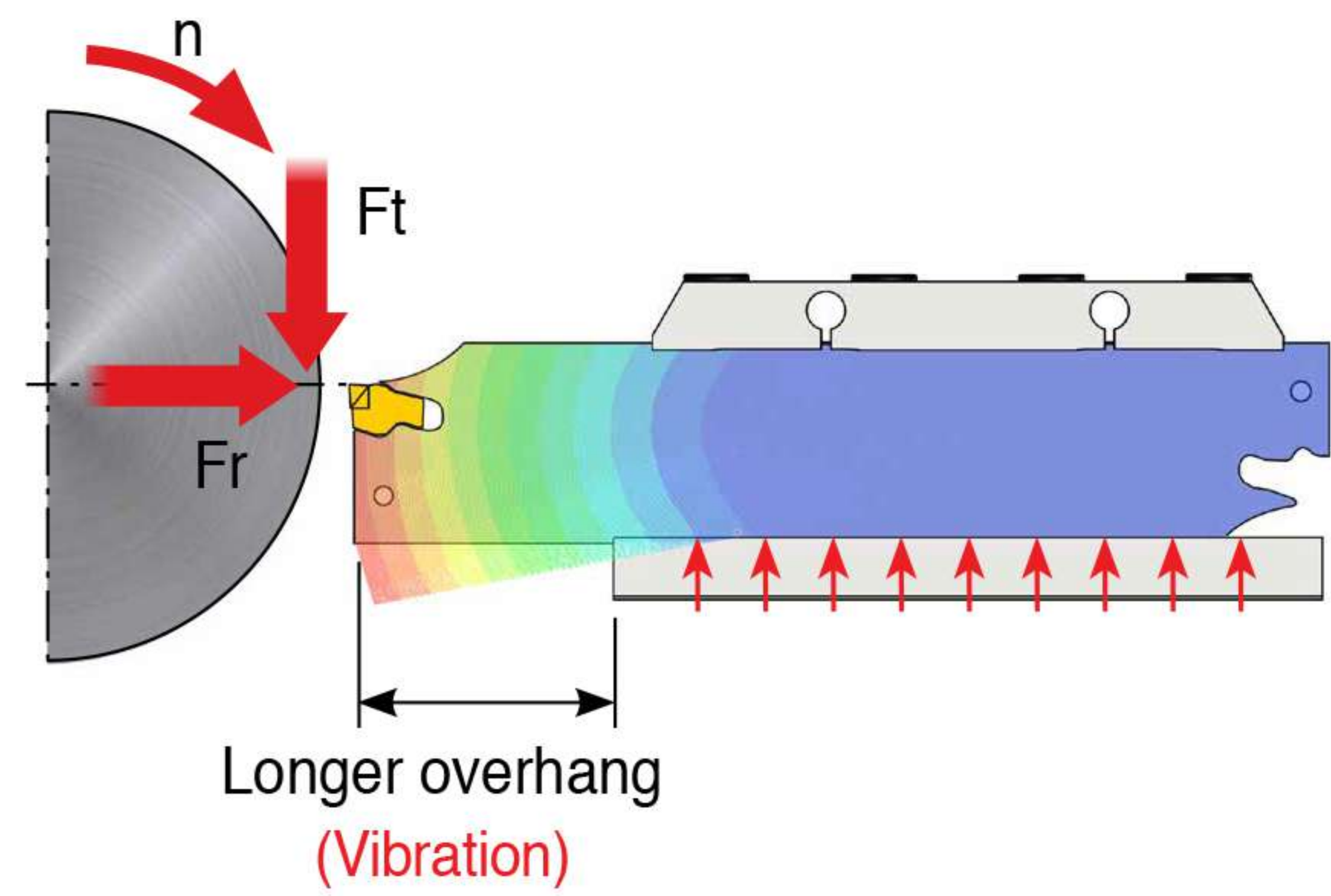
- Economical 3 insert pocket blade
 - Direct lubrication to the cutting zone from the blade's top and bottom coolant channels
 - Internal through-coolant channels for improved tool life in both parting and deep grooving applications
 - Excellent chip evacuation ensures stable machining and excellent surface finish
 - Maximum productivity in high-speed, high feed machining conditions
 - User-friendly insert clamping system
- High rigidity triangular blades and dedicated blocks
 - At least 3 times better rigidity comparing to conventional blade
- Triangular blades are compatible with CUT-SFEED and T-CLAMP inserts
- Compatible with a wide variety of machines including multitasking and general CNC machines
- Maximum diameter Ø120 mm bars can be cut with 2 and 3 mm width inserts to reduce material costs



Rigidity: Triangular blade vs Conventional blade

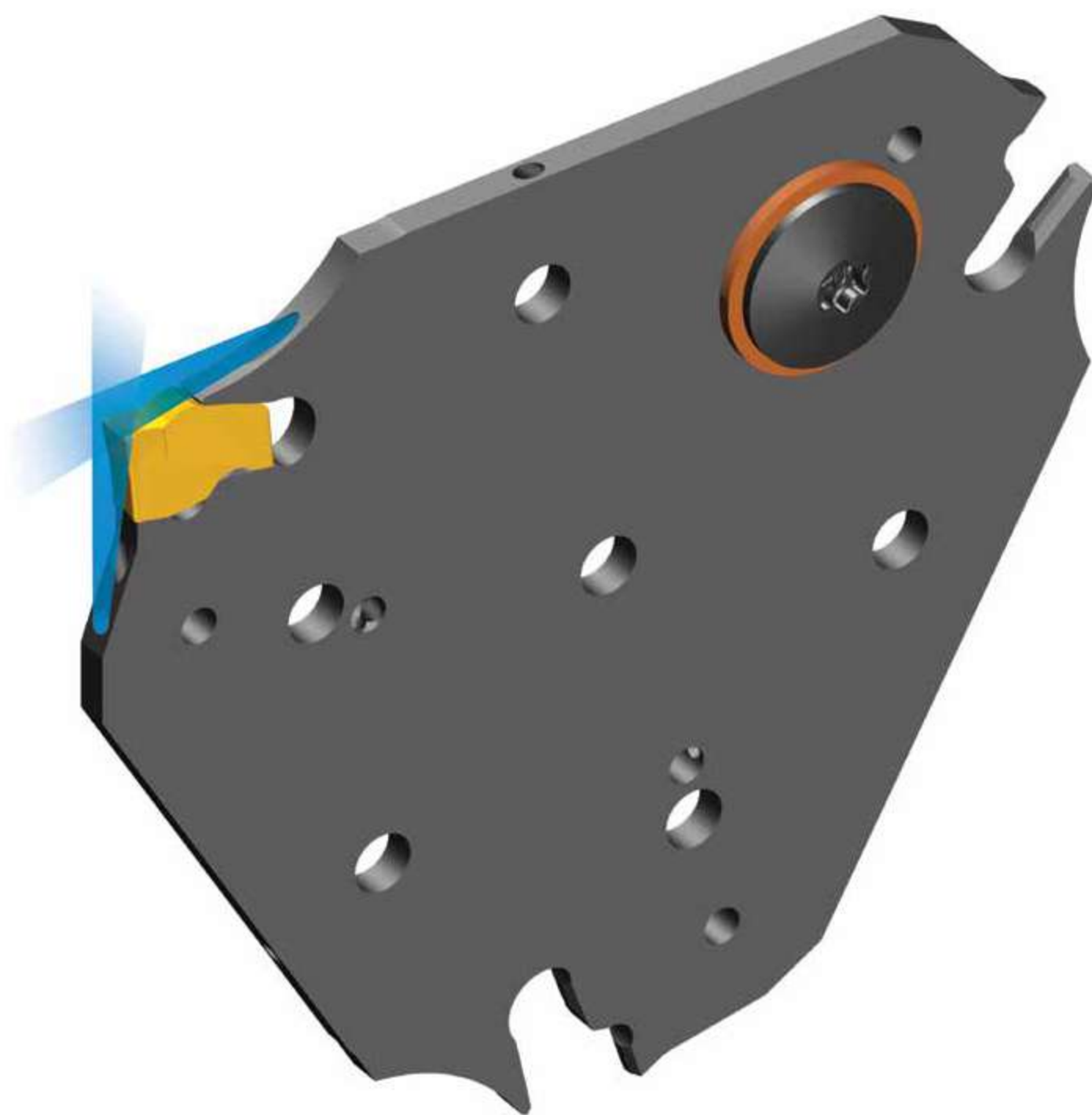


Triangular blade with enhanced rigidity and stable support structure
(No vibration)

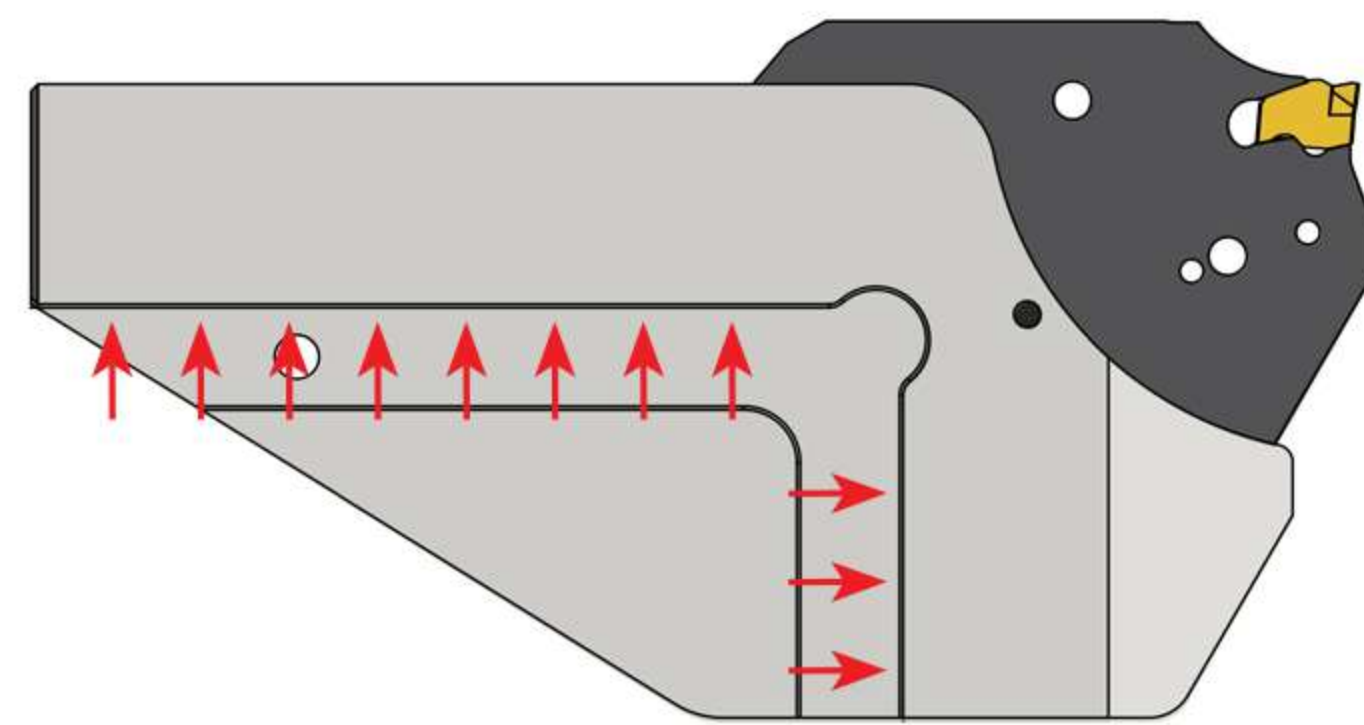


Conventional blade

Directed coolant supply to the cutting zone



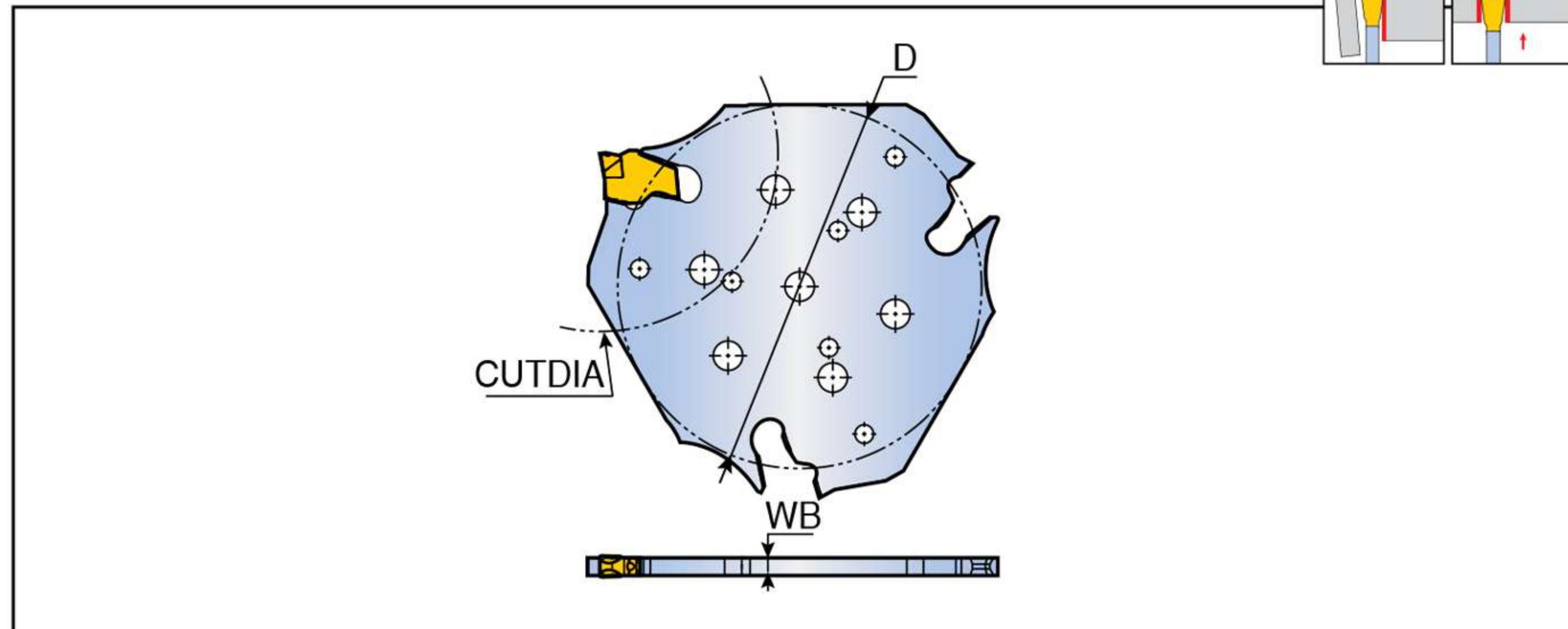
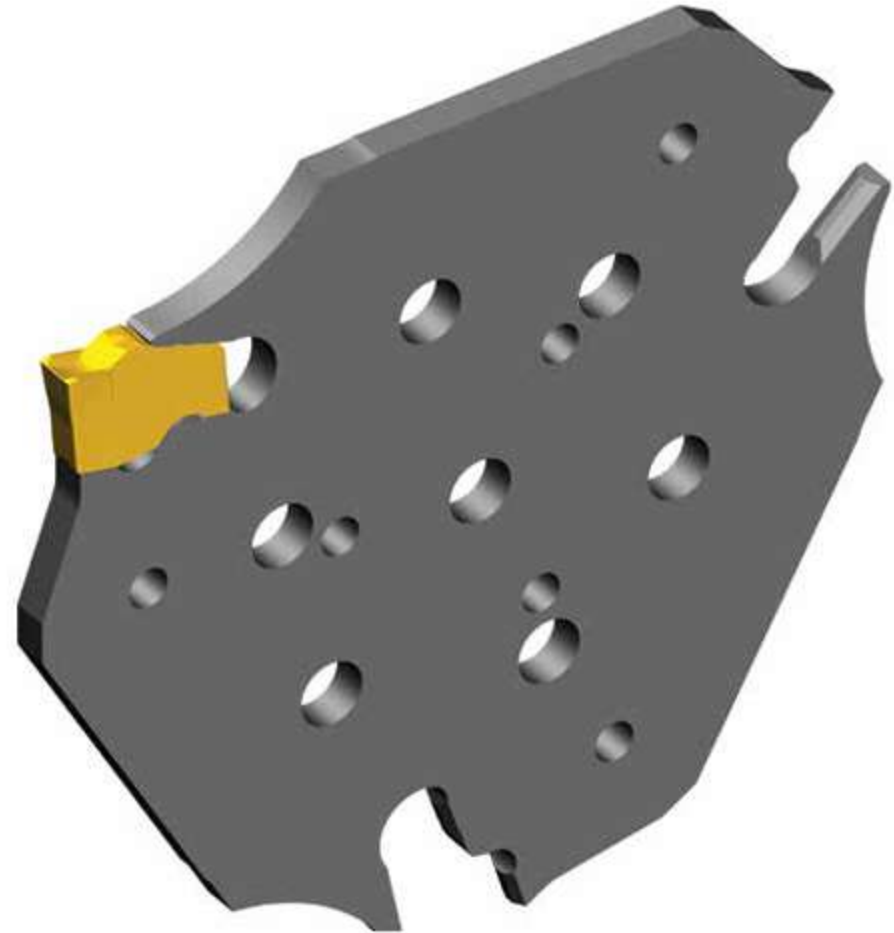
Blocks with stable tightening and rigid support structures



SFTB



Triangular blades for parting and deep grooving

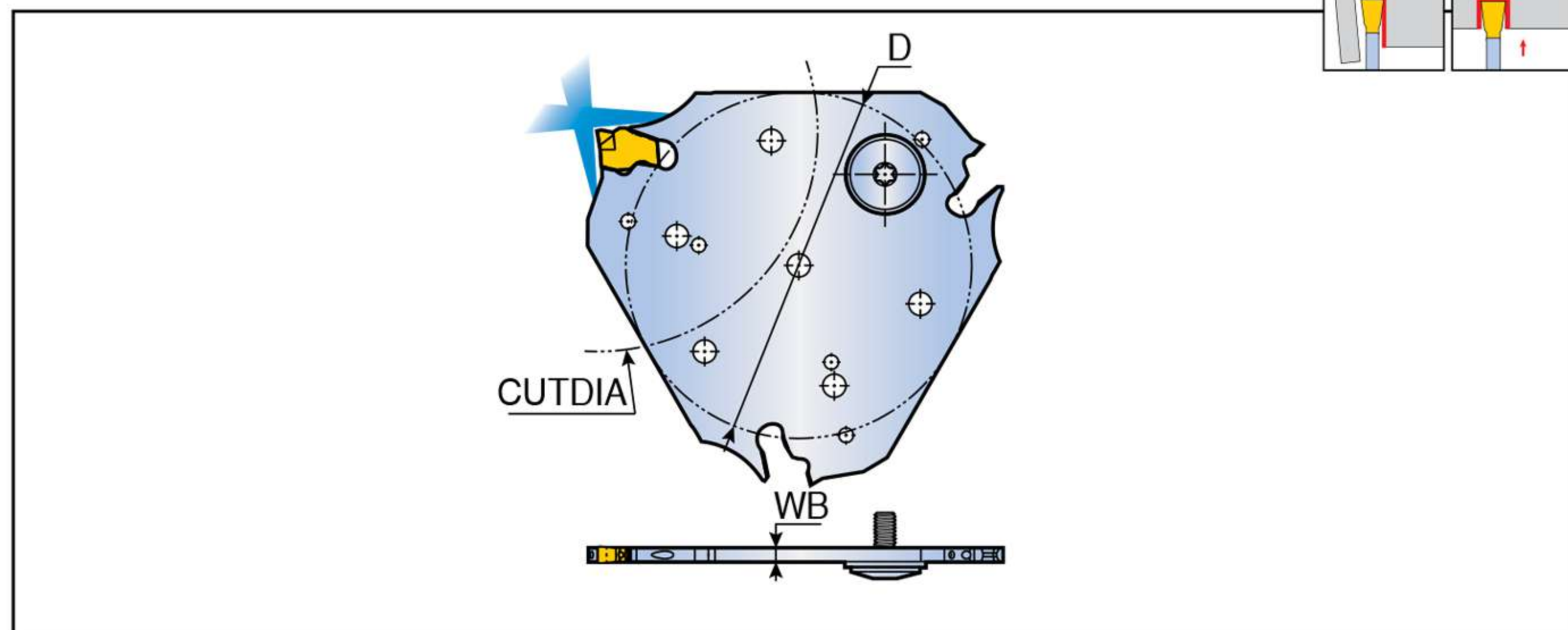


Designation	Insert seat size	Dimension (mm)			Block	Insert
		D	WB	CUTDIA		
SFTB D52-2	2	53.2	1.8	52	THTBR/L-TB	SFC SFJ
D52-3	3	53.2	2.5	52		
D82-2	2	64.3	1.8	82		
D82-3	3	64.3	2.5	82		
D120-2	2	85.5	1.8	120		
D120-3	3	85.5	2.5	120		

SFTB-TB new



Triangular blades for parting and deep grooving with high-pressure coolant



Designation	Insert seat size	Dimension (mm)			Block	Insert
		D	WB	CUTDIA		
SFTB D52-2-TB	2	53.2	1.8	52	THTBR/L-TB	SFC SFJ
D52-3-TB	3	53.2	2.5	52		
D82-2-TB	2	64.3	1.8	82		
D82-3-TB	3	64.3	2.5	82		
D120-2-TB	2	85.5	1.8	120		
D120-3-TB	3	85.5	2.5	120		

Spare parts

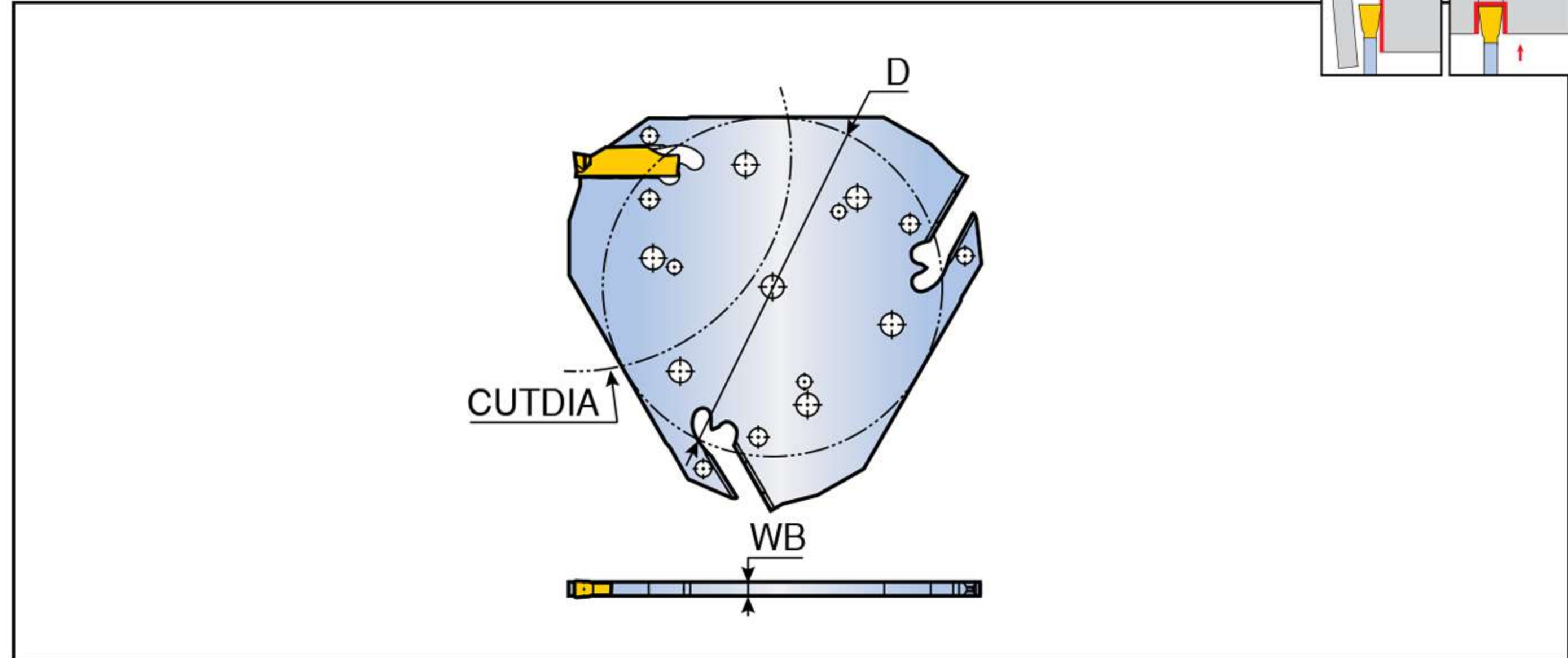
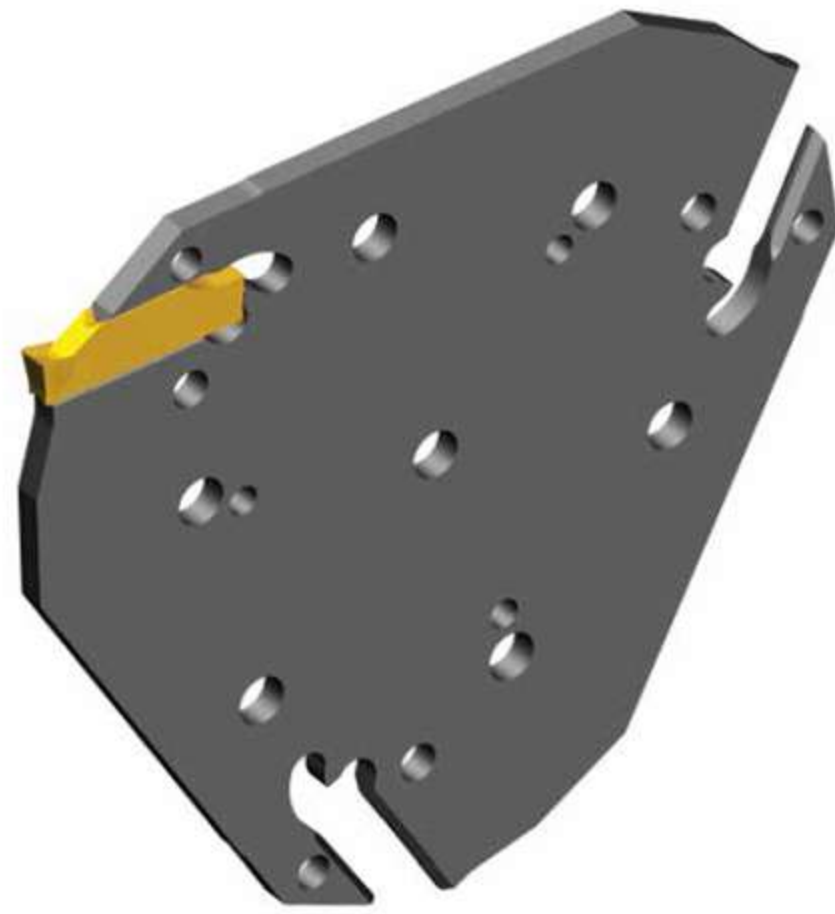
Designation	Sealing screw set	Extractor		
SFTB	-	ETG 3-4		
SFTB-TB	SGC 340-Q	ETG 3-4		

▶ Extractor should be ordered separately

TGTB



Triangular blades for parting and deep grooving

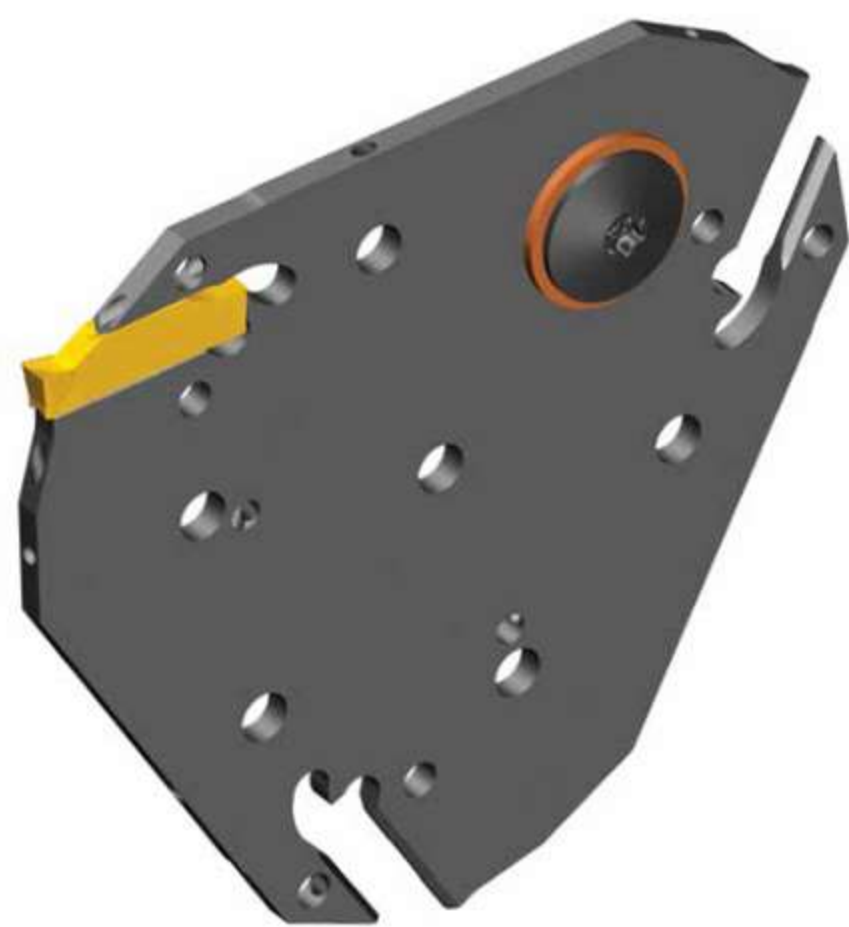


Designation	Insert seat size	Dimension (mm)			Block	Insert
		D	WB	CUTDIA		
TGTB D52-2	2	53.2	1.8	52	THTBR/L-TB	TDC/J TDXU/XT/XY/CT TSC/J TDFU/TDV
D52-3	3	53.2	2.5	52		
D82-2	2	64.3	1.8	82		
D82-3	3	64.3	2.5	82		

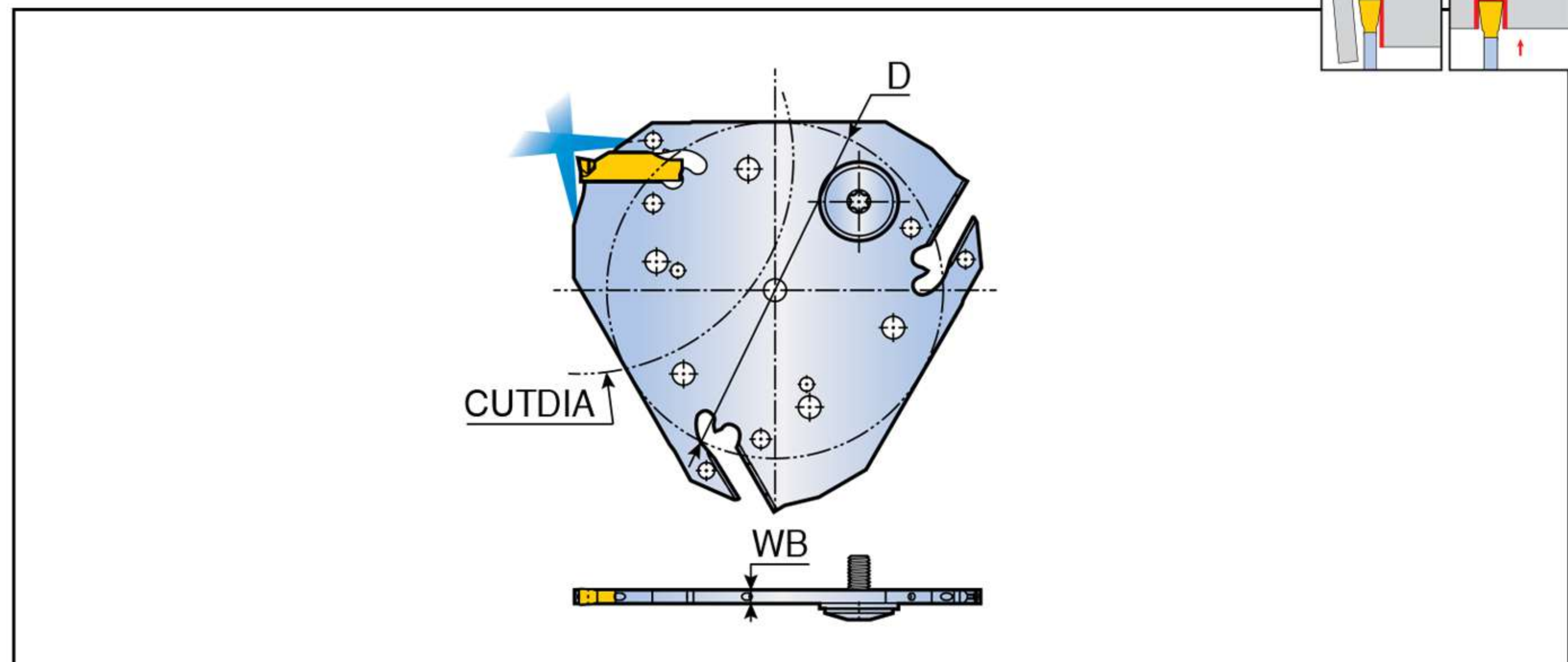
TGTB-TB new



Triangular blades for parting and deep grooving with high-pressure coolant



COOLBURST
PINPOINTED COOLANT



Designation	Insert seat size	Dimension (mm)			Block	Insert
		D	WB	CUTDIA		
TGTB D52-2-TB	2	53.2	1.8	52	THTBR/L-TB	TDC/J TDXU/XT/XY/CT TSC/J TDFU/TDV
D52-3-TB	3	53.2	2.5	52		
D82-2-TB	2	64.3	1.8	82		
D82-3-TB	3	64.3	2.5	82		

Spare parts

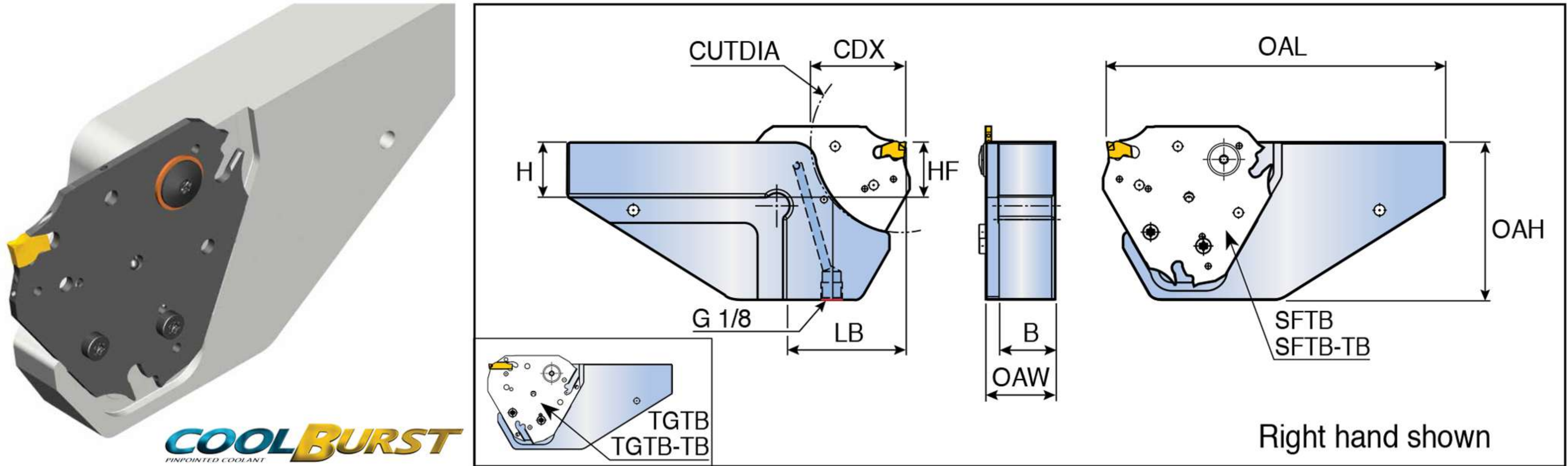
Designation	Sealing screw set	Extractor		
	TGTB			
TGTB-TB	SGC 340-Q	EDG 33B		

▶ Extractor should be ordered separately

THTBR/L-TB

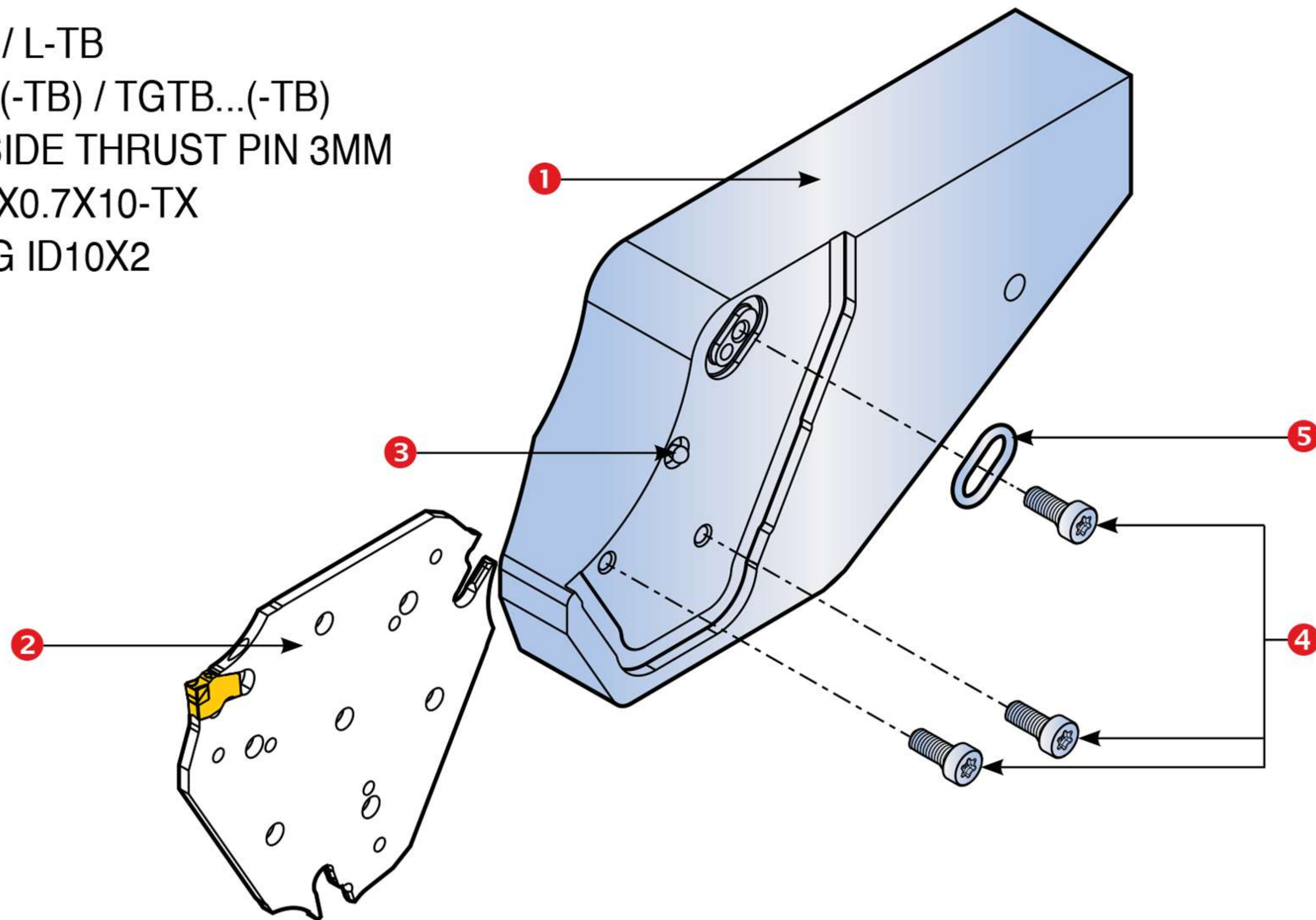


Blocks for triangular blade



Designation	Dimension (mm)								Blade
	H	HF	B	OAL	OAH	OAW	LB	CUTDIA	
THTBR/L 20-D52-TB	20	20	17.5	125	52	23.5	40	52	SFTB/SFTB-TB TGTB/TGTB-TB
20-D82-TB	20	20	17.5	140	72	23.5	51.5	82	
25-D52-TB	25	25	22.5	135	52	28.5	40	52	
25-D82-TB	25	25	22.5	150	72	28.5	51.5	82	
25-D120-TB	25	25	22.5	165	95	28.5	67	120	
32-D120-TB	32	32	29.0	165	95	35.0	67	120	

- 1 Block: THTBR / L-TB
- 2 Blade: SFTB...(-TB) / TGTB...(-TB)
- 3 Locating pin: SIDE THRUST PIN 3MM
- 4 Screw: SH M4X0.7X10-TX
- 5 O-ring: O-RING ID10X2



Spare parts

Designation	Locating pin	Screw	O-Ring	Wrench
THTBR/L-TB	SIDE THRUST PIN 3MM	SH M4X0.7X10-TX	O-RING ID10X2	T 20

CONTACT US



MEGA TECH METALWORK CO.,LTD (Headquarter)



Tel : 02-943-1591



Fax : 02-943-1592



Line ID : @mgt_metalwork



Email : sales.m@mgtg.co.th



Web : <https://www.mgtg.co.th/>



**17/4 Soi Ramintra 89
Ramintra Khannayao
Bangkok 10230**

